

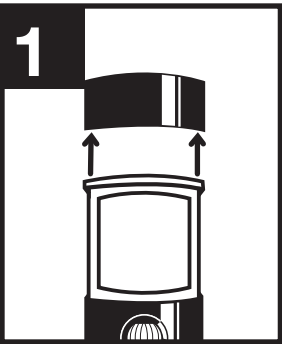
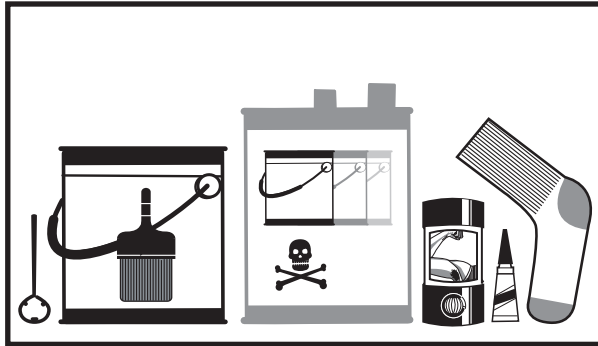
# Deodorant Marker



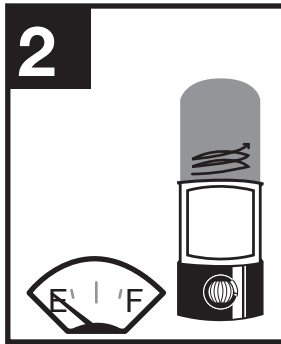
## Supplies:

Deodorant  
Paint or ink  
Paint thinner

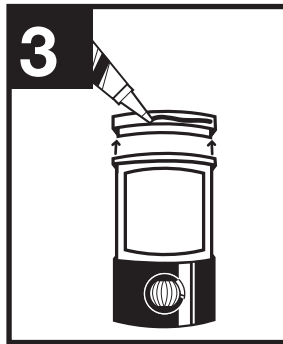
Sock  
Supper Glue



1  
Take cap off of deodorant container.



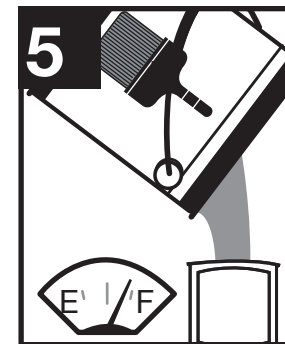
2  
Empty the deodorant bar container.



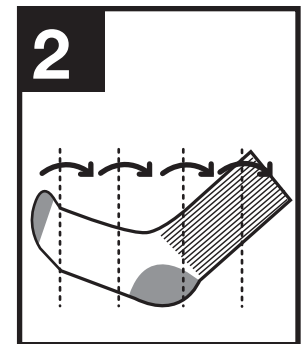
3  
Remove the piece that holds deodorant and apply super glue around it.



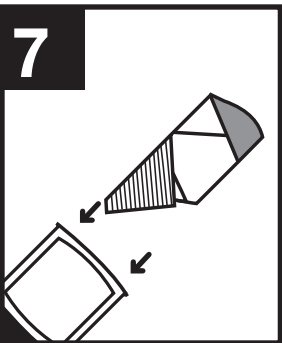
4  
Place the piece back in.



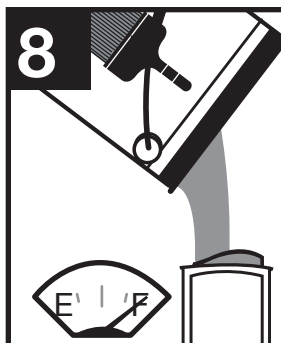
5  
Partially fill container with paint or ink.



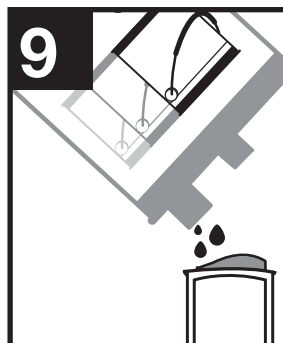
2  
Roll up a sock the width of the container.



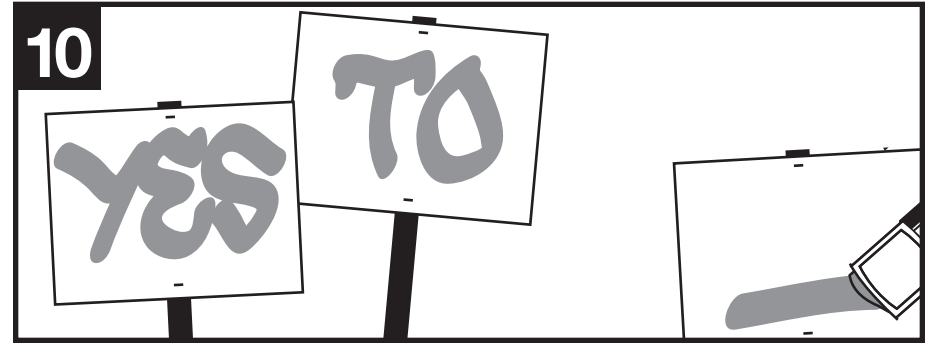
7  
Insert sock into the deodorant container.



8  
Fill the rest of the container with paint or ink so that the sock may become saturated.



9  
Add some thinner.



10  
Use. Works on most smooth surfaces.