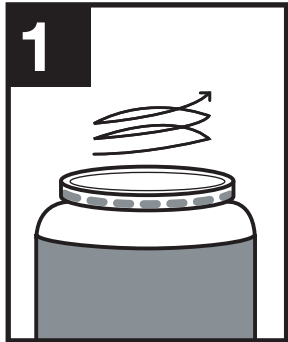
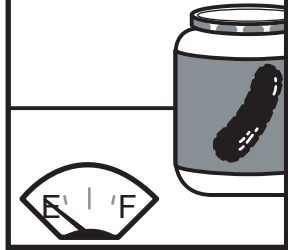


PickleJar Brush

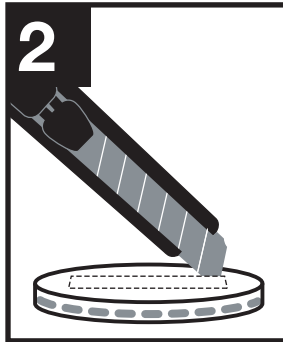
Supplies:

Empty pickle Jar
Paint or ink
Paint thinner

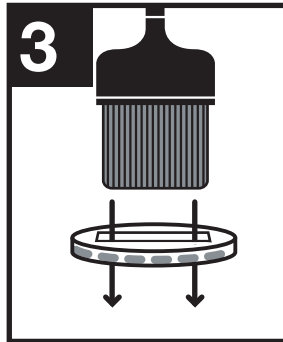
Brush
Liquid nails
Box cutter



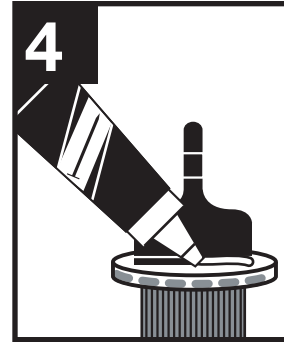
1 Take the top off of the pickle jar.



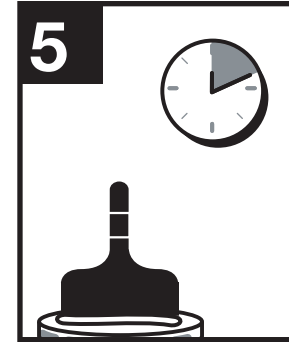
2 Cut a rectangle out of top of jar.



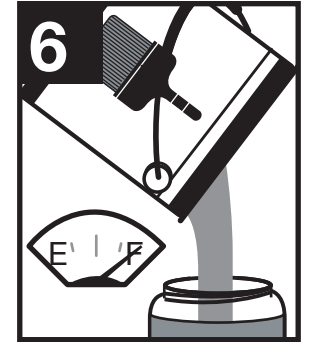
3 Place the brush through the cut rectangle.



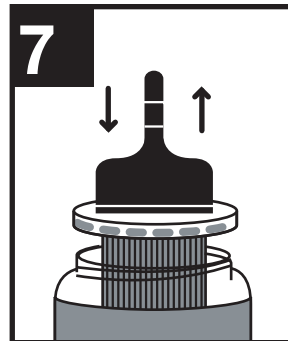
4 Thin the paint or ink with thinner or gasoline.



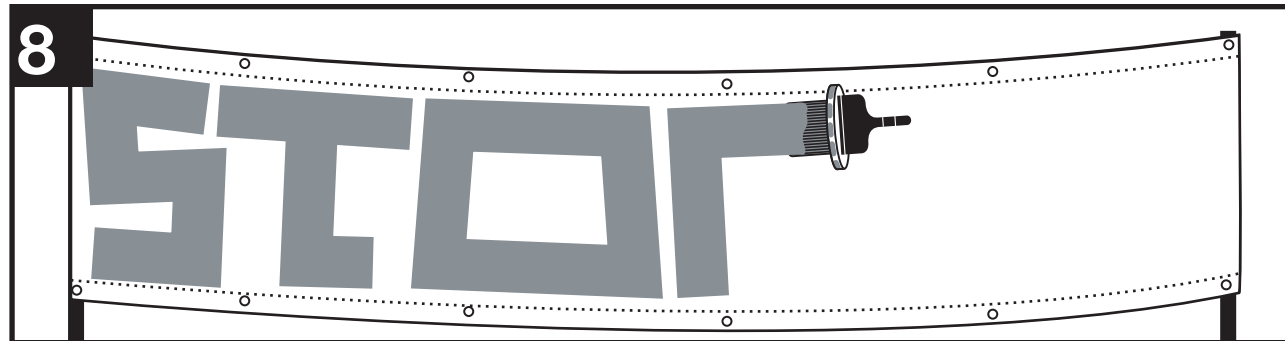
5 Let glue dry.



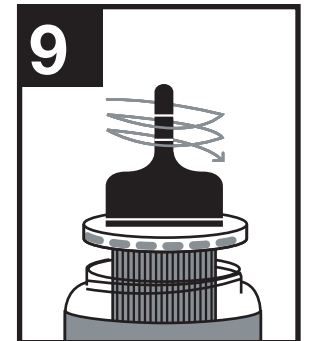
6 Fill jar with paint or ink.



7 Dip brush in the jar.



8 Use. Works well with most surfaces.



9 Close pickle jar.