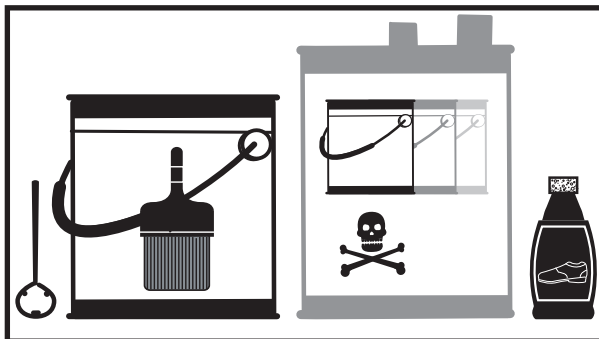


Shoe Polish Marker



Supplies:

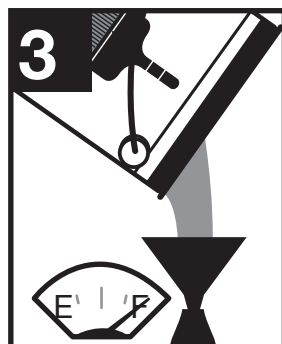
Shoe polish
Paint or ink
Paint thinner



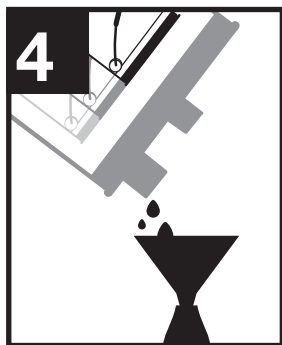
1 Take the top off the shoe polish container.



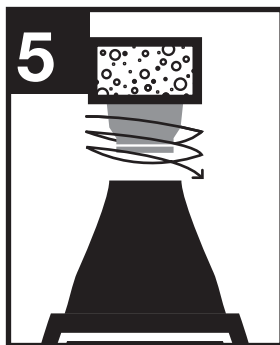
2 Empty contents of the container thoroughly.



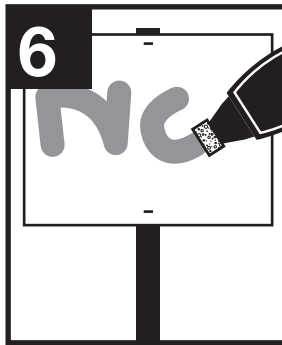
3 Fill container almost full with paint or ink.



4 Add a few drops of turpentine or gasoline.



5 Put the cap back on.



6 Use. This marker is useful for smooth surfaces such as: paper, metal, plastic, etc.